

# Comparables report

This report provides comparable property information selected by

**Hartswood Property Management**

to help establish the best market price for

**W4 5NG**

21 March 2023



Search area  
**W4 5NG**



Search radius  
**Within ¼ mile**



Marketed on Zoopla  
**From 24/11/2022  
to 24/02/2023**



Property type  
**Flat**



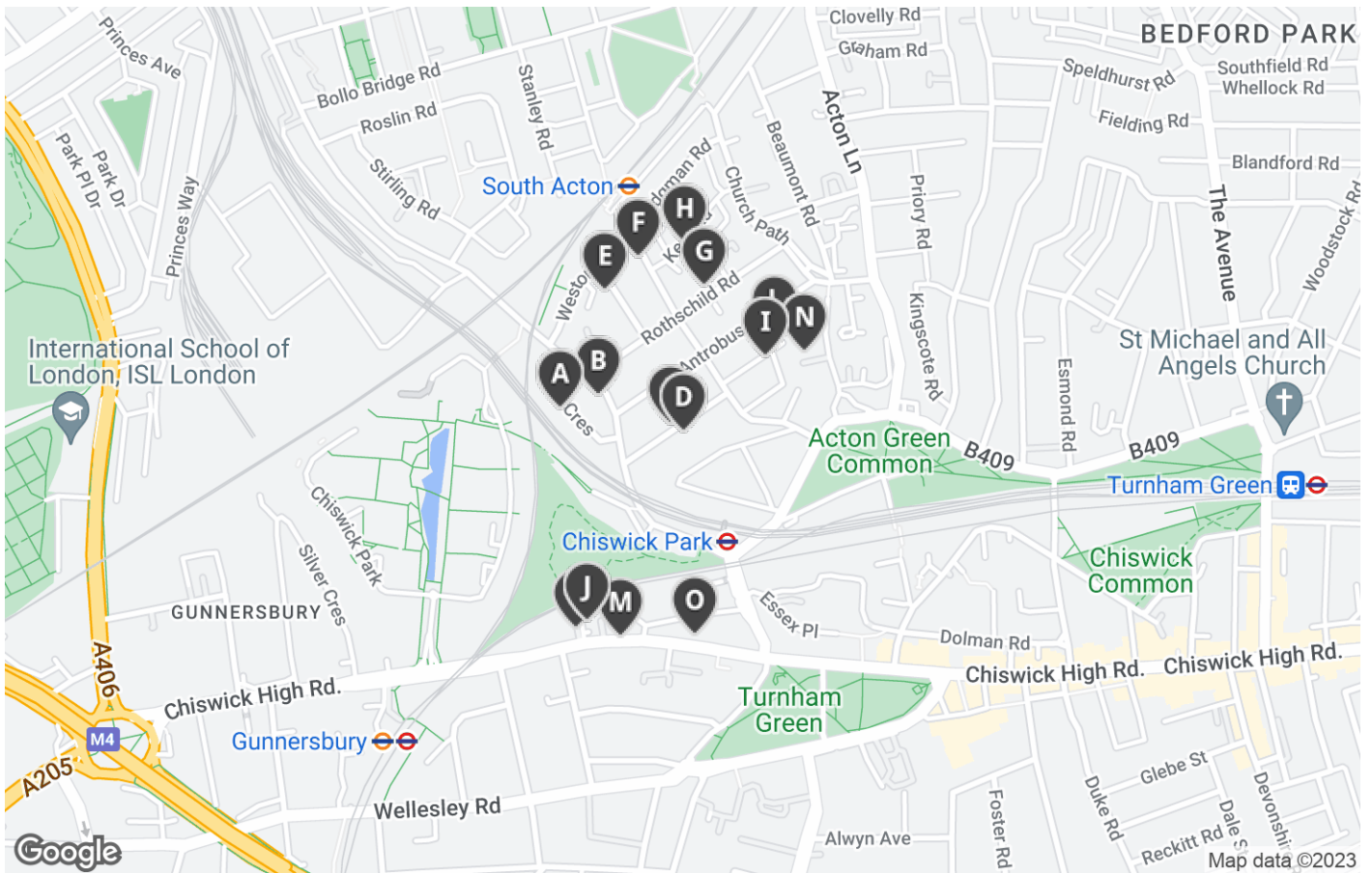
Bedrooms  
**1+**



Price:  
**£1,500 pcm to  
£2,000 pcm**



## A Comparable properties



## Comparable rental properties



**A** **£1,900 pcm (£438 pw)**  
 Ivy Crescent, Chiswick, London W4

2 Flat

Chestertons are pleased to offer this beautifully presented 2 bedroom 1st floor conversion flat, ideally located on quiet residential road just minutes from Chiswick Park Underground (District ...



**B** **£1,647 pcm (£380 pw)**  
 Bollo Lane, London W4 **ARCHIVED**

**Distance:** 0.04 miles

1 Flat

This ground floor one bedroom apartment is in the process of going through a new refurbishment. The property offers a large reception room and direct access into a grass laid garden. Bollo Lane ...

## Comparable rental properties



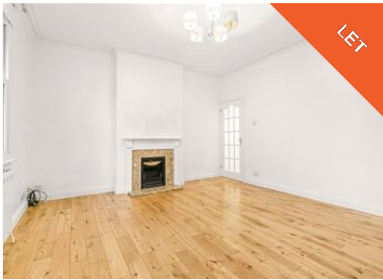
**£1,800 pcm (£415 pw)**

Montgomery Road, Chiswick W4 **ARCHIVED**

**Distance:** 0.11 miles

1 Flat

A delightful one bedroom flat located on the first floor of a period building with access to a communal garden. The property comprises a spacious reception room which benefits from plenty of ...



**£1,750 pcm (£404 pw)**

Montgomery Road, London W4 **ARCHIVED**

**Distance:** 0.13 miles

1 Flat

A bright and spacious one bedroom, ground floor garden flat that is located on a desirable road in Chiswick. The property comprises a charming reception room with feature fireplace, a good size ...



**£1,651 pcm (£381 pw)**

Temple Road, London W4 **ARCHIVED**

**Distance:** 0.13 miles

1 Flat

This spacious one bedroom flat is located on a quiet tree lined street and offers flexible living accommodation. There is a large bedroom with built in storage, living room with bay window and ...



**£1,600 pcm (£369 pw)**

Kingswood Road, Chiswick, London W4 **ARCHIVED**

**Distance:** 0.17 miles

1 Flat

Zero deposit available. Long let. Set within an attractive period conversion, this superb 1 bedroom ground floor flat has lots of character and features a 30' rear garden. The shops, cafes and ...



**£1,898 pcm (£438 pw)**

Rothschild Road, Chiswick, London W4

**Distance:** 0.19 miles

1 Flat

This neutrally decorated, light and bright, central Chiswick apartment also offers allocated off-street parking, lovely modern kitchen and bathroom, and great storage spaces. It is a really ...

## Comparable rental properties



**H** **£1,500 pcm (£346 pw)**  
 Kent Road, Chiswick Park W4

Distance: 0.21 miles

1 Flat **46 sq. m\***

A well presented 498 Sq Ft / 46 Sq M, one bedroom apartment that features a 13'9 reception room and lovely southwest facing private garden. The accomodation comprises: 13'9 reception room, 12'7 ...



**I** **£1,525 pcm (£352 pw)**  
 Antrobus Road, Chiswick, London W4 **ARCHIVED**

Distance: 0.21 miles

1 Flat

Property located in Antrobus Road, Chiswick, London This newly refurbished property offers open reception room, fitted kitchenette with doors onto small patio garden, small bedroom ...



**J** **£1,800 pcm (£415 pw)**  
 Chiswick High Road, London W4 **ARCHIVED**

Distance: 0.21 miles

1 Flat

Situated on the ever popular Chiswick High Road, this stylish and modern one bedroom apartment offers luxury living and an excellent location.



**K** **£1,798 pcm (£415 pw)**  
 Chiswick High Road, London W4 **ARCHIVED**

Distance: 0.22 miles

1 Flat

This modern apartment offers in access of 800 sq.ft of accommodation, has off-street parking and is ideally located for all the shops and amenities of Chiswick High Road. Chiswick High Road is ...



**L** **£1,699 pcm (£392 pw)**  
 Seymour Road, London W4 **ARCHIVED**

Distance: 0.23 miles

1 Flat

Private Portfolio Landlord offers to the rental market a modern, chic and well-presented 1 bed ground floor apartment (530 sq ft) with a good sized private garden in the heart of Chiswick with ...

## Comparable rental properties



**£1,950 pcm (£450 pw)**

Chiswick High Road, London W4 **ARCHIVED**

Distance: 0.23 miles

1 Flat

Beautiful 1 bedroom contemporary flat with balcony ideally located for walking on Chiswick High Road to local shops, sidewalk cafes, theatre, boutiques, markets, cinema, restaurants and river ...



**£2,000 pcm (£462 pw)**

Chiswick Green Studios, 1 Evershed Walk, London W4

Distance: 0.25 miles

**ARCHIVED**

1 Flat

Contemporary loft style apartment in a highly sought after development.



**£1,998 pcm (£461 pw)**

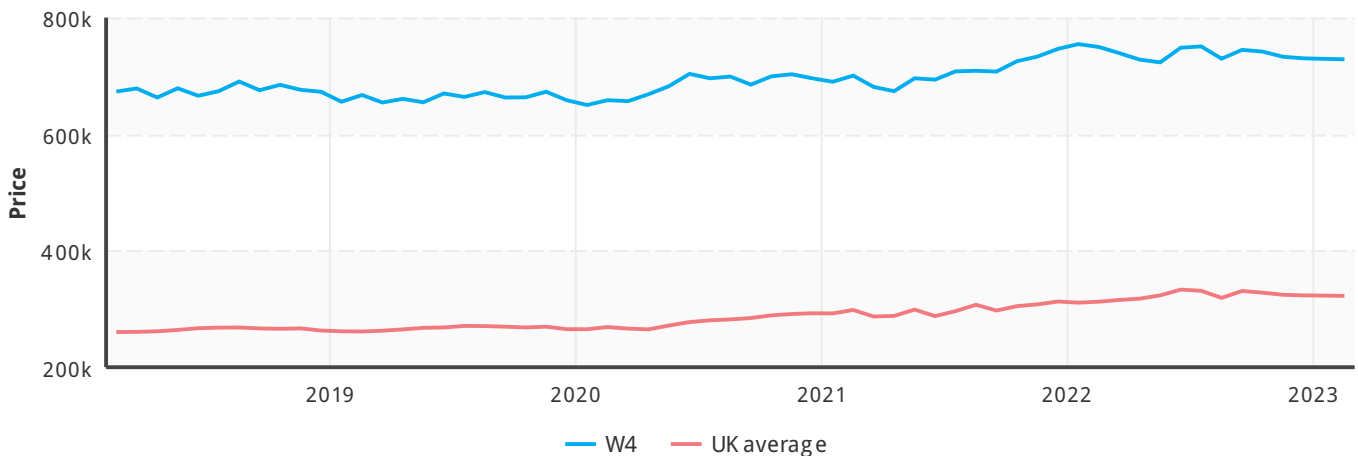
Chiswick High Road, London W4 **ARCHIVED**

Distance: 0.26 miles

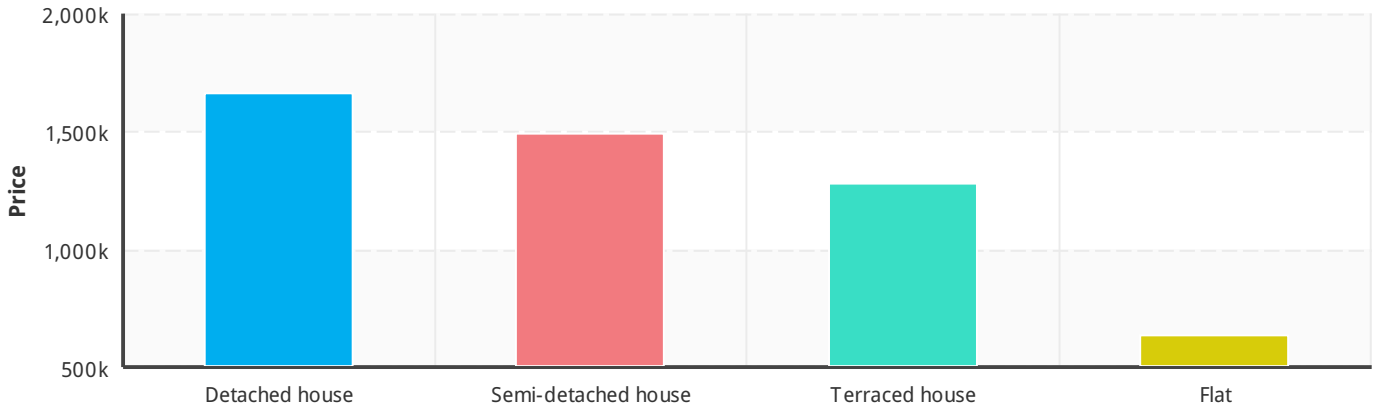
1 Flat

This spacious one double bedroom apartment has been recently renovated to the highest standard. The offers wood floors throughout the living area, an open plan kitchen with built in appliances and ...

## Average home values nationwide



## Average home values in W4 by property type



## Home value ranges in W4

